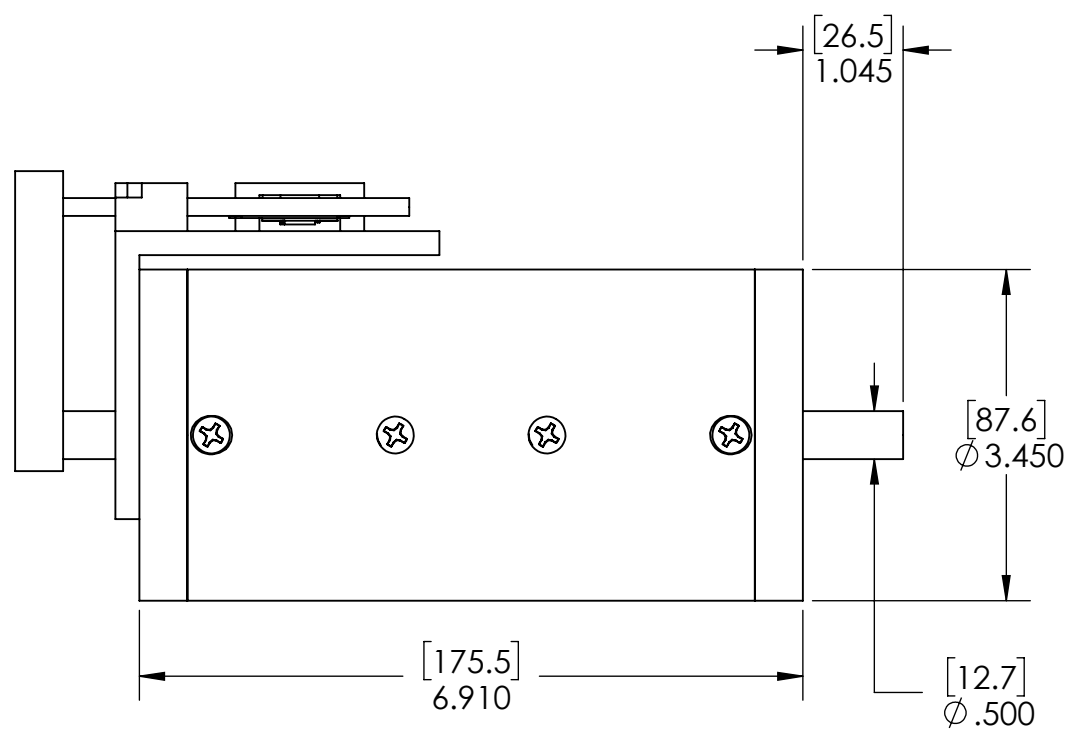
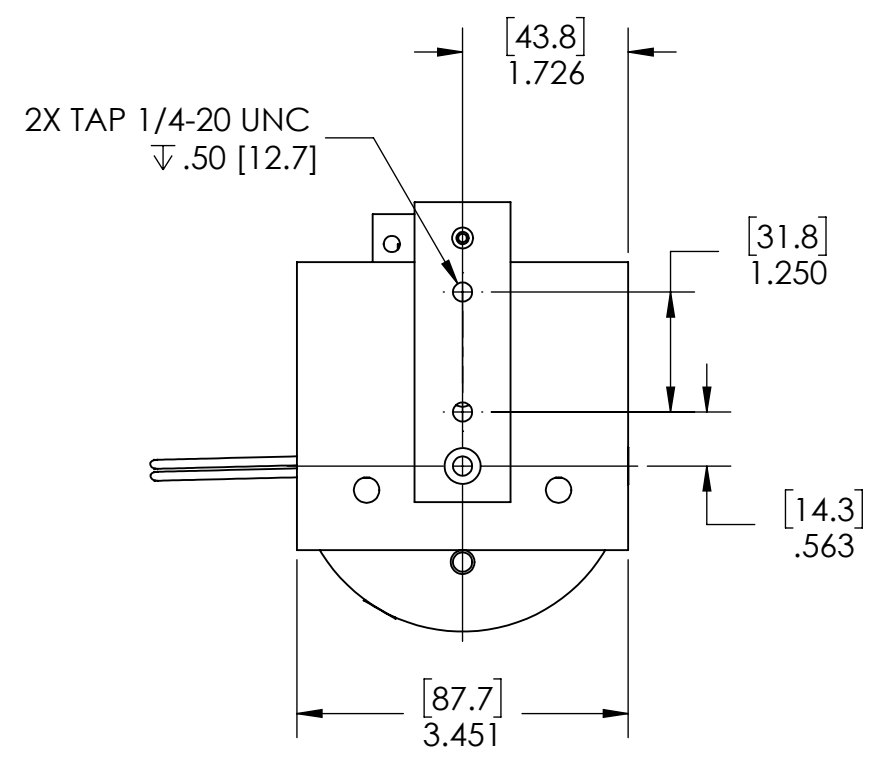
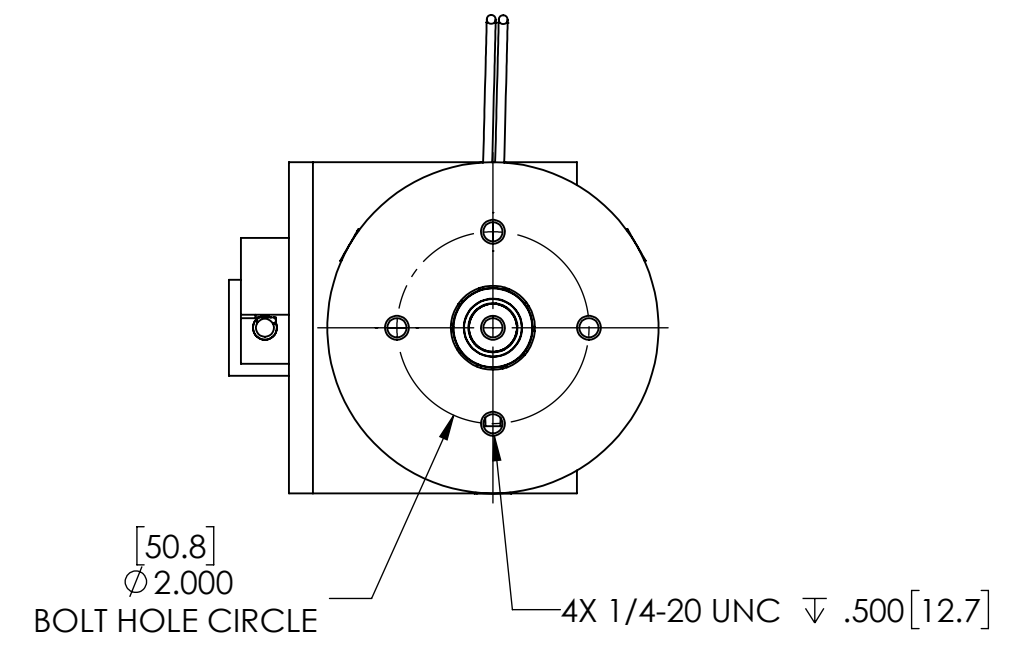
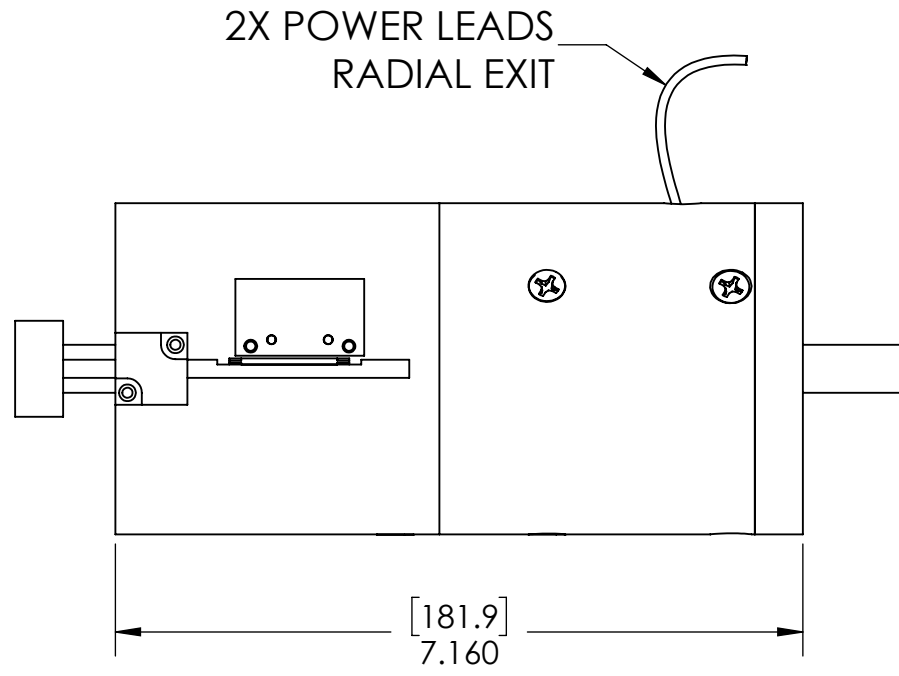


MOTOR SHOWN AT MIDSTROKE

REVISION TABLE					
REV	ECN#	DESCRIPTION	REV BY	APPROVED	DATE
---	---	Original Drawing	SDC	MPW	11-7-17
A	2056	Remove second mounting bracket and mounting holes	LLR	MPW	10-17-18



A

A

B

B

C

C

D

D

VOICE COIL POSITIONING STAGE SPECIFICATIONS		
Motor P/N	NCM08-35-450-3LB	
Stroke	0.75"	19.1 mm
Bearing Type	Linear Bushings	
Moving Mass	4.80 lbs	2180 grams
Total Mass	13.8 lbs	6260 grams
Resistance @ 20°C	12.0 ohms	
Inductance @ 20°C	6.45 mH	
Electrical Time Constant	0.55 msec	
Motor Constant	5.42 lbs/sqrt(Watt)	24.1 N/sqrt(Watt)
Force Constant	18.8 lbs/Amp	83.6 N/Amp
Back EMF	2.1 V/ips	83.6 V/m/sec
Continuous Force	45 lbs	200 N
Max Power @ 100% Duty	68 Watts	
Peak Force	135 lbs	600 N
Max Power @ 10% Duty	620 Watts	

